



KATWA COLLEGE

(Affiliated to the University of Burdwan)

Principal's Office,

P.O.: Katwa, Dist.: Purba Bardhaman, West Bengal, PIN: 713130, India.

Mobile: +918101078393

॥ विद्यया विन्दतेऽमृतम् ॥

Criterion 7 – Institutional values and Best Practices

7.1.2 The Institution has facilities & initiatives

Documents: Geo-tagged photographs/videos of the institutional facilities

Signature of the IQAC Coordinator

Coordinator
IQAC
Katwa College

Signature of the Principal

Principal
Katwa College



KATWA COLLEGE

(Affiliated to the University of Burdwan)

Principal's Office,

P.O.: Katwa, Dist.: Purba Bardhaman, West Bengal, PIN: 713130, India.

Mobile: +918101078393

॥ विद्यया विन्दतेऽमृतम् ॥

7.1.2 The Institution has facilities & initiative for

1. Alternate sources of energy & energy conservation measures
2. Management of the various types of degradable & non-degradable waste
3. Water Conservation
4. Green campus initiatives
5. Disabled –friendly, barrier free environment

Signature of the IQAC Coordinator

Coordinator
IQAC
Katwa College

Signature of the Principal

Principal
Katwa College



KATWA COLLEGE

(Affiliated to the University of Burdwan)

Principal's Office,

P.O.: Katwa, Dist.: Purba Bardhaman, West Bengal, PIN: 713130, India.

Mobile: +918101078393

॥ विद्यया विन्दतेऽमृतम् ॥

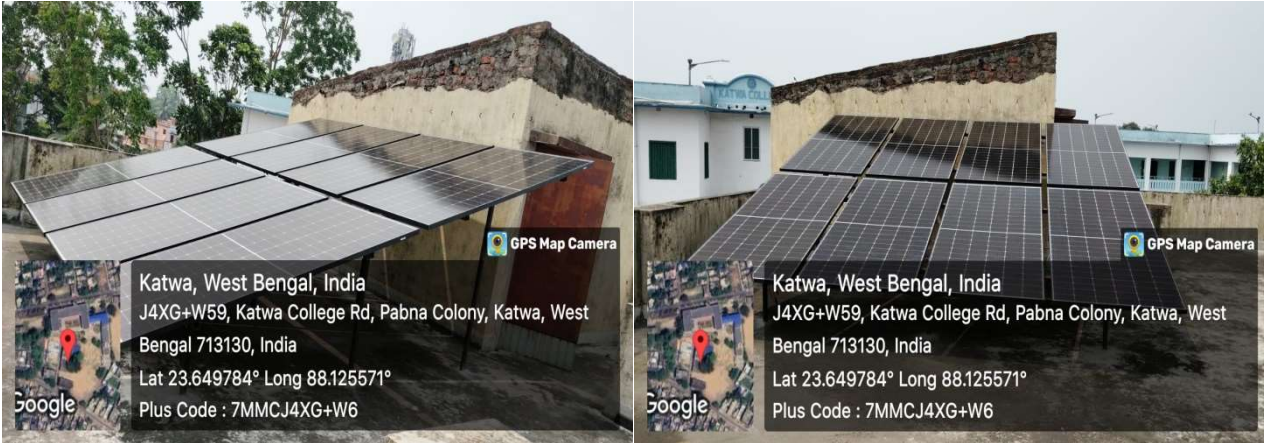
1. Alternate sources of energy & energy conservation measures

Facilities provided in the college:

1. Solar Energy:

Solar energy is being used in most educational institutions to power classrooms, hostels & canteen of educational institutions across the country.

Katwa college authority started its initiatives for installing rooftop 6.7kVA photovoltaic station in the college premises since January 2024. College authority provided 500sq.m rooftop on the Administrative building for the said work. Though, college authority urged the chairman of W.B. Pollution Control Board to set up a rooftop 10 kVA photovoltaic stations through a letter & ultimately, a rooftop solar station has been installed in the college on 25.05.2024.



Rooftop Solar Panel on the Administrative Building of Katwa College

Signature of the IQAC Coordinator

**Coordinator
IQAC
Katwa College**

Signature of the Principal

**Principal
Katwa College**



KATWA COLLEGE

(Affiliated to the University of Burdwan)

Principal's Office,

P.O.: Katwa, Dist.: Purba Bardhaman, West Bengal, PIN: 713130, India.

Mobile: +918101078393

॥ विद्यया विन्दतेऽमृतम् ॥

2. Wheeling to the Grid:

A grid-connected system allows any excess electricity; the college produces to be fed back into the grid.

Wheeling to the grid system has been recently installed for generation of enough electricity using sun-ray to meet the requirement of electricity of the college.



Wheeling to the Grid

3. Sensor-based energy conservation:

Lights in the classrooms, staffroom, corridors & toilets may be kept on in day time also. Motion sensors are used in these places to automatically switch on the light when there is any movement & switch off the light when there is no movement. This can reduce the total load of current consumption in the college premises.

Signature of the IQAC Coordinator

Coordinator
IQAC
Katwa College

Signature of the Principal

Principal
Katwa College



KATWA COLLEGE

(Affiliated to the University of Burdwan)

Principal's Office,

P.O.: Katwa, Dist.: Purba Bardhaman, West Bengal, PIN: 713130, India.

Mobile: +918101078393

॥ विद्यया विन्दतेऽमृतम् ॥



Sensors mounted on the wall of class rooms

4. LED bulbs & LED tube lights:

Katwa College is using LED bulbs & tube lights in the office rooms, laboratories & classrooms of the college by replacing normal tube lights CFL bulbs



LED facility in the class room

LED facility in the staff room

5. Fixing "Switch off lights & fans when not in use" stickers.

Signature of the IQAC Coordinator

**Coordinator
IQAC
Katwa College**

Signature of the Principal

**Principal
Katwa College**



KATWA COLLEGE

(Affiliated to the University of Burdwan)

Principal's Office,

P.O.: Katwa, Dist.: Purba Bardhaman, West Bengal, PIN: 713130, India.

Mobile: +918101078393

॥ विद्यया विन्दतेऽमृतम् ॥



Sticker containing power conservation message

Benefit of the facilities:

- Emission of greenhouse gases in the college campus is reduced to some extent.
- Such facilities are very eco-friendly.
- College can save a lot of money by reducing the load of power consumption.

2. Management of the various types of degradable & non-degradable waste

Waste management is a herculean task for any educational institution. Katwa College dreams about 'clean campus, Green Campus.'

Waste management policy includes:

- To identify & classify the waste.
- To segregate recyclable & reusable materials.
- To reduce the Waste.
- To strategize collection & transportation of the Waste.
- To suggest possible treatment method.

The NSS unit & Nature club of the college are playing a vital role in this purpose. They are regularly organizing various awareness generation programmes throughout the year for achieving this purpose.

Signature of the IQAC Coordinator

Coordinator
IQAC
Katwa College

Signature of the Principal

Principal
Katwa College



KATWA COLLEGE

(Affiliated to the University of Burdwan)

Principal's Office,

P.O.: Katwa, Dist.: Purba Bardhaman, West Bengal, PIN: 713130, India.

Mobile: +918101078393

॥ विद्यया विन्दतेऽमृतम् ॥

Work Description:

College has segregated waste into 3 parts:-

1. Solid Waste
2. Liquid Waste
3. Hazardous Lab Waste

Solid Waste Management:

The college has signed a MOU (Memorandum of Agreement) with local municipality i.e., Katwa Municipality on 15/04/2023 for solid management in a proper way.

Solid wastes are mainly of 2 types:-

- I. Non-Biodegradable waste &
- II. Biodegradable waste.

The waste is generated by all sorts of routine activities carried out in the college that includes waste paper, plastics, glass, metals, foods etc.

Non-biodegradable solid waste material are collected from different departments & offices time to time by sweepers of the college & stored in the properly labelled dustbins (Green & Blue) & waste chambers for disposal.

For proper recycling of waste paper, college has a licentiate vender through which waste papers are transferred to Krishna Tissue paper mills Ltd, Burdwan for recycling & disposal in a scientific way.

Some non-biodegradable solid waste are stored in a chamber (made of Concrete) at the backside of the college building & are cleaned by the Katwa Municipality.

Bio-degradable waste such as food materials, leaves, grasses, flowers etc. stored in a separate waste chamber & processed to make bio-fertilizer for cultivating flowers & different types of medicinal & economical plants in the land within the college premises.

Signature of the IQAC Coordinator

Coordinator
IQAC
Katwa College

Signature of the Principal

Principal
Katwa College



KATWA COLLEGE

(Affiliated to the University of Burdwan)

Principal's Office,

P.O.: Katwa, Dist.: Purba Bardhaman, West Bengal, PIN: 713130, India.

Mobile: +918101078393

॥ विद्यया विन्दतेऽमृतम् ॥

Katwa Municipality provided field training on 'Solid Waste Management' to manage properly the solid wastes generated within the college campus to Ten(10) students of 3 units of NSS as a part of the programme under the MOU signed on 15.04.2023 between Katwa College and Katwa Municipality.



Waste (Bio-Degradable & Non-Bio Degradable) Management by the assistance of Katwa Municipality



Signature of the IQAC Coordinator

Coordinator
IQAC
Katwa College

Signature of the Principal

Principal
Katwa College



KATWA COLLEGE

(Affiliated to the University of Burdwan)

Principal's Office,

P.O.: Katwa, Dist.: Purba Bardhaman, West Bengal, PIN: 713130, India.

Mobile: +918101078393

॥ विद्यया विन्दतेऽमृतम् ॥

Non-Bio-Degradable & Bio-Degradable Dustbins

Waste management in the Bio-Degradable Chamber



Solid waste management through S.R. TRADERS to KRISHNA TISSUE PVT. LTD., Burdwan Katwa road, Narja More

Liquid Waste management:-

Liquid waste mainly generated by the college is of 2 types:-

- I. Sewage Waste &
- II. Laboratory & canteen effluent waste

Waste water of toilet of the campus is disposed through sewage or sanitary chamber & pipelines into the high drain of Katwa municipality. Impure water from roof top tank is purified by installing water purifier in different floors of the college premises. Rain Water harvesting facility is also available in the college campus.

Liquid chemicals used in the various labs of science departments for experiment purposes mainly consist of organic solvents. Waste solvent are stored as mixed solvents and are recycled using distillation technique in the chemistry department.

Signature of the IQAC Coordinator

Coordinator
IQAC
Katwa College

Signature of the Principal

Principal
Katwa College



KATWA COLLEGE

(Affiliated to the University of Burdwan)

Principal's Office,

P.O.: Katwa, Dist.: Purba Bardhaman, West Bengal, PIN: 713130, India.

Mobile: +918101078393

॥ विद्यया विन्दतेऽमृतम् ॥



Distillation set-up of liquid waste solvent in the Chemistry laboratory

E-Waste management & Waste recycling:

E-Waste describes the electrical and electronic waste which is non-repairable and non-usable in future. These are computer monitors, printers, scanners, Key boards, mice, cables, circuit boards, calculators, electric bulbs, tube lights & other materials & electronic components like diodes, transistors, capacitors, wires etc. All the E-waste are collected from the college by the West Bengal Electronics Industry Development Corporation Limited (WBEIDCL), Kolkata, a PSU under the administrative control of the department of Information Technology & Electronics, Govt. of West Bengal authorised for E-Waste management facility in West Bengal for recycling scientifically following the terms & conditions of the agreement.

Signature of the IQAC Coordinator

Coordinator
IQAC
Katwa College

Signature of the Principal

Principal
Katwa College



KATWA COLLEGE

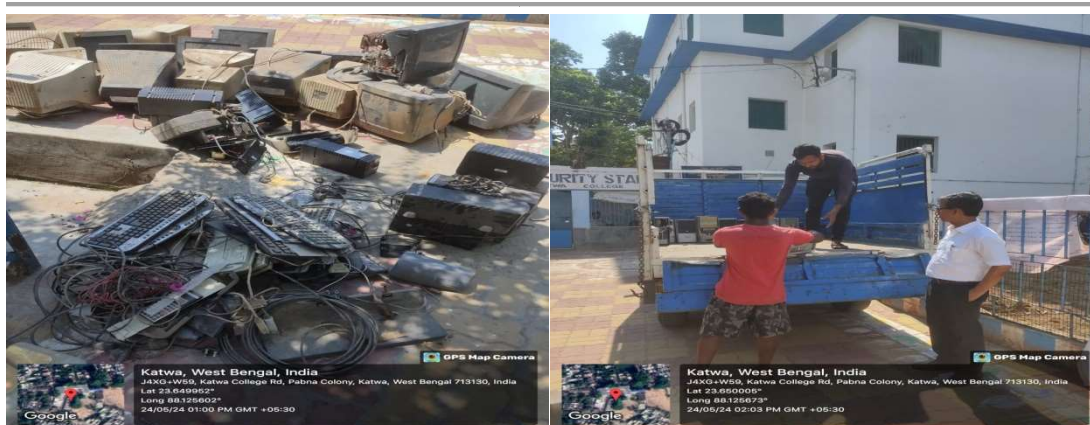
(Affiliated to the University of Burdwan)

Principal's Office,

P.O.: Katwa, Dist.: Purba Bardhaman, West Bengal, PIN: 713130, India.

Mobile: +918101078393

॥ विद्यया विन्दतेऽमृतम् ॥



E-waste management with the assistance of WBEIDCL, Kolkata a PSU under GOVT. of W.B.

Biomedical Waste Management:-

Very little amount of biomedical waste from Physiology & Zoology labs are mainly cotton, gauze, gloves, blood, mask etc. which are collected in a marked waste bin. Then it is handed over the dedicated health care workers of Katwa Municipality at a regular basis for scientific waste management.

Hazardous Chemical & Radioactive Waste Management:-

These are disposed into specially made waste chamber of sufficient depth & treated chemically.

Radioactive materials are not used at all.

Signature of the IQAC Coordinator

Coordinator
IQAC
Katwa College

Signature of the Principal

Principal
Katwa College



KATWA COLLEGE

(Affiliated to the University of Burdwan)

Principal's Office,

P.O.: Katwa, Dist.: Purba Bardhaman, West Bengal, PIN: 713130, India.

Mobile: +918101078393

॥ विद्यया विन्दतेऽमृतम् ॥

3. Water conservation

Facilities available in the college:

1. Rain water harvesting & construction of tank:

There are two main ways of rain water harvesting are:

*Surface run off harvesting:

In urban area, rain water flows away as surface runoff can be used recharging aquifers.

*Rooftop rain water harvesting:

It is a system of catching rain water where it falls. The water stored by this ways is used for various purposes such as gardening, irrigation etc.

The katwa college had started initiatives for rain water harvesting from the month of May in the year of 2023 & constructed rain water harvesting project which is the collection of rain water that runs off from rooftop & this run off rainwater is recharged into the ground water table & a storage tank with rain water to be used in gardening, irrigation etc. College has set up rain water harvesting (ground water recharge circular shaped trough injection well) with the technical assistance of Public Works Dept.(PWD), Social Sector Purba Bardhaman, W.B. at the cost of Rs. 9,43,167.00.



Rain water harvesting (ground water recharge circular shaped trough injection well)

Signature of the IQAC Coordinator

Coordinator
IQAC
Katwa College

Signature of the Principal

Principal
Katwa College



KATWA COLLEGE

(Affiliated to the University of Burdwan)

Principal's Office,

P.O.: Katwa, Dist.: Purba Bardhaman, West Bengal, PIN: 713130, India.

Mobile: +918101078393

॥ विद्यया विन्दतेऽमृतम् ॥

2. Bore well / Open well recharge:

Katwa college has proper facilities of bore well for providing clean water in the college campus. There are 7 submersible pumps for supplying fresh & clean drinking water & also for other activities.

3. Waste water recycling:

The college has also made proper arrangement for recycling/ reuse of most of the waste water. Aqua guards placed in the different floors of the college building are purifying impure water stored in the rooftop water tanks & this water is used for drinking, washing, cleaning & watering in the garden.



Waste water recycling through soak pit

4. Maintenance of water distribution system in the college campus.

Water distribution system is disinfected on a regular basis in a scientific manner to provide clean & germ free water throughout the campus.

Signature of the IQAC Coordinator

Coordinator
IQAC
Katwa College

Signature of the Principal

Principal
Katwa College



KATWA COLLEGE

(Affiliated to the University of Burdwan)

Principal's Office,

P.O.: Katwa, Dist.: Purba Bardhaman, West Bengal, PIN: 713130, India.

Mobile: +918101078393

॥ विद्यया विन्दतेऽमृतम् ॥



Maintenance of water distribution system in the college campus

Benefit of the work:

- *Reducing water loss & saving natural water resources.
- * Conserve water, helps in reducing water bill.
- * Decreasing the demand of water.

Water conservation measures:

Katwa College will implement the following measures to conserve water:

A. Maintenance & infrastructure:

- *Regularly inspect & repair plumbing fixtures, pipelines to minimize leaks & wastage.
- *Install water- efficient fixtures, such as low-flow toilets & faucets.
- * Utilize rainwater harvesting systems.

Signature of the IQAC Coordinator

Coordinator
IQAC
Katwa College

Signature of the Principal

Principal
Katwa College



KATWA COLLEGE

(Affiliated to the University of Burdwan)

Principal's Office,

P.O.: Katwa, Dist.: Purba Bardhaman, West Bengal, PIN: 713130, India.

Mobile: +918101078393

॥ विद्यया विन्दतेऽमृतम् ॥

B. Awareness & Education:

* Conduct awareness campaigns, workshops & seminar to educate all the stakeholders of the college about water conservation practices.

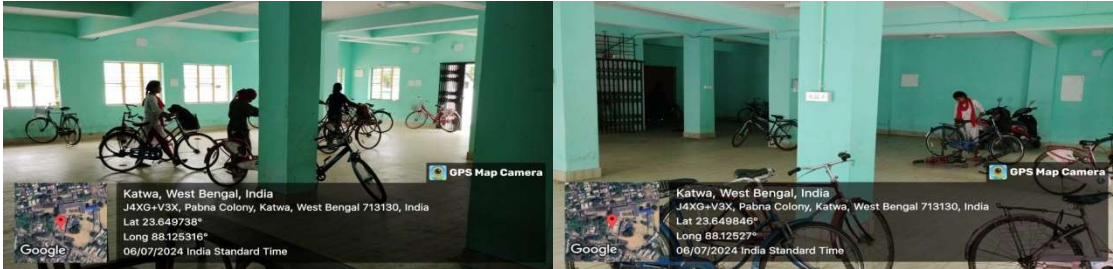
* Display signage & posters reminding individuals to conserve water in common areas & outdoor spaces of the college campus.

* Incorporate water conservation topics into the curriculum where applicable.

4. Green campus initiatives

Restricted entry of automobiles:

Katwa College strictly maintains the restricted entry of automobiles. Four/two wheelers owned by the faculty members have restricted entry in the campus. Such Vehicles are parked in the stipulated parking stand of the college. Bicycles or two wheelers are parked in the college cycle stand which is outside the main campus. College authority maintains no 'Vehicle Day' on every Saturday of each week to control air pollution within the campus.



College cycle stand

Signature of the IQAC Coordinator

Coordinator
IQAC
Katwa College

Signature of the Principal

Principal
Katwa College



KATWA COLLEGE

(Affiliated to the University of Burdwan)

Principal's Office,

P.O.: Katwa, Dist.: Purba Bardhaman, West Bengal, PIN: 713130, India.

Mobile: +918101078393

॥ विद्यया विन्दतेऽमृतम् ॥

Use of Bicycles / Battery powered vehicles:

All stakeholders generally prefer bicycles or electric powered scooty as their mode of transport to maintain environment friendly campus.



Bicycles / Battery powered vehicles at cycle stand

Pedestrian Friendly Pathways:

College has pedestrian friendly pathways. Students & staffs enjoy comfort walking through the pedestrian friendly pathways within the campus.



Pedestrian Friendly Pathways

Signature of the IQAC Coordinator

Coordinator
IQAC
Katwa College

Signature of the Principal

Principal
Katwa College



KATWA COLLEGE

(Affiliated to the University of Burdwan)

Principal's Office,

P.O.: Katwa, Dist.: Purba Bardhaman, West Bengal, PIN: 713130, India.

Mobile: +918101078393

॥ विद्यया विन्दतेऽमृतम् ॥

Ban on single use Plastic:

In view of the Government of India's resolution, to ban all single use plastics due to the hazardous impact of plastic use & pollution, the college administration strictly bans the use of single use plastics in its campus to make it a 'Plastic Free Campus'. Plastic items such as plastic bottles, bags etc., are banned completely in Campus & awareness is created among staffs & students through display boards, notices & awareness campaigns.



Ban on single use Plastic

Signature of the IQAC Coordinator

Coordinator
IQAC
Katwa College

Signature of the Principal

Principal
Katwa College



KATWA COLLEGE

(Affiliated to the University of Burdwan)

Principal's Office,

P.O.: Katwa, Dist.: Purba Bardhaman, West Bengal, PIN: 713130, India.

Mobile: +918101078393

॥ विद्यया विन्दतेऽमृतम् ॥

Landscaping with trees & plants:

College authority tries its utmost efforts for development & maintenance of the greenery within the campus. It is an on-going process by tree plantation & gardening. Generally, Nature club looks after the matter of the greenery in the campus.



Signature of the IQAC Coordinator

Coordinator
IQAC
Katwa College

Signature of the Principal

Principal
Katwa College



KATWA COLLEGE

(Affiliated to the University of Burdwan)

Principal's Office,

P.O.: Katwa, Dist.: Purba Bardhaman, West Bengal, PIN: 713130, India.

Mobile: +918101078393

॥ विद्यया विन्दतेऽमृतम् ॥



Glimpses of Green Campus Initiatives



Noise Monitoring System in the Campus

Signature of the IQAC Coordinator

Coordinator
IQAC
Katwa College

Signature of the Principal

Principal
Katwa College



KATWA COLLEGE

(Affiliated to the University of Burdwan)

Principal's Office,

P.O.: Katwa, Dist.: Purba Bardhaman, West Bengal, PIN: 713130, India.

Mobile: +918101078393

॥ विद्यया विन्दतेऽमृतम् ॥

5. Disabled-friendly, barrier free environment

Katwa College provides barrier-free environment where students with disabilities can move about safely & use the facilities within the built environment. The academic atmosphere supports the independent functioning of individuals, so that they can participate without assistance in everyday activities within the campus.

Policy of the work for inclusion of people with disabilities on campus

The College promotes & inculcates the values of love, compassion, equality & justice through eliminating social exclusion & encouraging the students to be aware of the problems of the disadvantaged sections of society, focusing on inclusion of people with disabilities by promoting the rights & dignity of each individual.

Objectives:

1. To ensure that students with disabilities get equal opportunities to explore their educational potentials.
2. To provide a nurturing & motivating environment for students with learning disabilities to accommodate their pedagogic needs.
3. To eradicate any kind of stigmatization & segregation so that they can become confident individuals.

Institutional infrastructures for Disabled students:

1. Installation of Ramps:

Ramp-rails, an inclined plane, are built in addition to staircases in the various sections of the college. The ramps are carefully designed as per specifications to be used by the differently abled students.

Signature of the IQAC Coordinator

Coordinator
IQAC
Katwa College

Signature of the Principal

Principal
Katwa College



KATWA COLLEGE

(Affiliated to the University of Burdwan)

Principal's Office,

P.O.: Katwa, Dist.: Purba Bardhaman, West Bengal, PIN: 713130, India.

Mobile: +918101078393

॥ विद्यया विन्दतेऽमृतम् ॥



Ramps

2. Provision of Wheelchair for disabled students:

College provides wheelchair for disabled persons or students.



Provision of Wheelchair for disabled students

Signature of the IQAC Coordinator

Coordinator
IQAC
Katwa College

Signature of the Principal

Principal
Katwa College



KATWA COLLEGE

(Affiliated to the University of Burdwan)

Principal's Office,

P.O.: Katwa, Dist.: Purba Bardhaman, West Bengal, PIN: 713130, India.

Mobile: +918101078393

॥ विद्यया विन्दतेऽमृतम् ॥

3. Installation of hand Railings in the staircases:

Hand railings are fitted along the staircase to move easily.



Installation of hand Railings in the staircases

4. Constructions of disabled friendly Washrooms:

College has set up disabled friendly washrooms for gents & ladies separately.



Disabled friendly Washrooms

Signature of the IQAC Coordinator

Coordinator
IQAC
Katwa College

Signature of the Principal

Principal
Katwa College



KATWA COLLEGE

(Affiliated to the University of Burdwan)

Principal's Office,

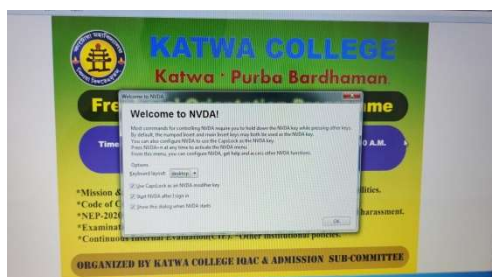
P.O.: Katwa, Dist.: Purba Bardhaman, West Bengal, PIN: 713130, India.

Mobile: +918101078393

॥ विद्यया विन्दतेऽमृतम् ॥

5. Screen Reader:

Screen reader is an assistive software programme which helps the visually impaired or the blind to work with computer. The Non Visual Desktop Access (NVDA) is free; open-source software. It is installed in the computers at B.ED dept. to help the visually challenged students in learning.



Non Visual Desktop Access (NVDA)

6. Enquiry Room & personal Assistance:

The Enquiry Room provides all the needed information to the differently-abled & human assistance.



Signature of the IQAC Coordinator

Coordinator
IQAC
Katwa College

Signature of the Principal

Principal
Katwa College



KATWA COLLEGE

(Affiliated to the University of Burdwan)

Principal's Office,

P.O.: Katwa, Dist.: Purba Bardhaman, West Bengal, PIN: 713130, India.

Mobile: +918101078393

॥ विद्यया विन्दतेऽमृतम् ॥

7. Scribe (sometimes referred to as an Amanuensis):

A person who writes when a student dictates answers in the examination hall.

Signature of the IQAC Coordinator

Coordinator
IQAC
Katwa College

Signature of the Principal

Principal
Katwa College